



LPG PUMP PACKAGE

OPERATION

The **STABILIZER™** LPG Pump Package is offered in both Duplex and Simplex configurations to transfer liquid LPG at a required stable flowrate and pressure to any of EEI's comprehensive line of LPG vaporizers or LPG/Air blending systems. LPG pumping package forms the heart of *any* liquid transfer, vaporization or LPG/Air blending process. EEI uses a positive displacement rotary vane pump for standard applications. Centrifugal or multi-stage regenerative turbines are available and provided for special applications.

Positive displacement rotary vane pumps are designed for heavy service under harsh conditions. They have proven their reliability over decades of steady performance. The pump casing includes an integral internal bypass valve to eliminate the potential for over pressurizing the pump. The **STABILIZER™** pump package includes a by-pass line, by-pass valve, isolation valves, check valves, pressure gauges and a pilot operated pressure regulator.

Each pump package is supplied with an explosion proof electric motor and is designed to meet Class I, Division 1, Group D requirements.

STANDARD FEATURES

- All electrical components and their installation comply with (USA) NFPA Pamphlet 58 and 70.
- Explosion Proof configuration meets Class I, Division 1, Group D design.
- All exposed metal surfaces are mechanically cleaned, primed and painted.
- Electric motors provided with 1.1 minimum service factor.
- Includes all standard trim components: by-pass valve, isolation valves, check valves, basket strainer, pressure gauges, hydrostatic relief valves and a downstream pilot operated regulator.
- Oversize inlet piping helps eliminate cavitation.
- Sized for lower RPM's to reduce vane wear and improve NPSH.
- Bent steel baseplate.
- Unions provided for easy disassembly.
- Worldwide Voltages: 480V-60hz / 380V-50hz

Models SB1.25 - SB4



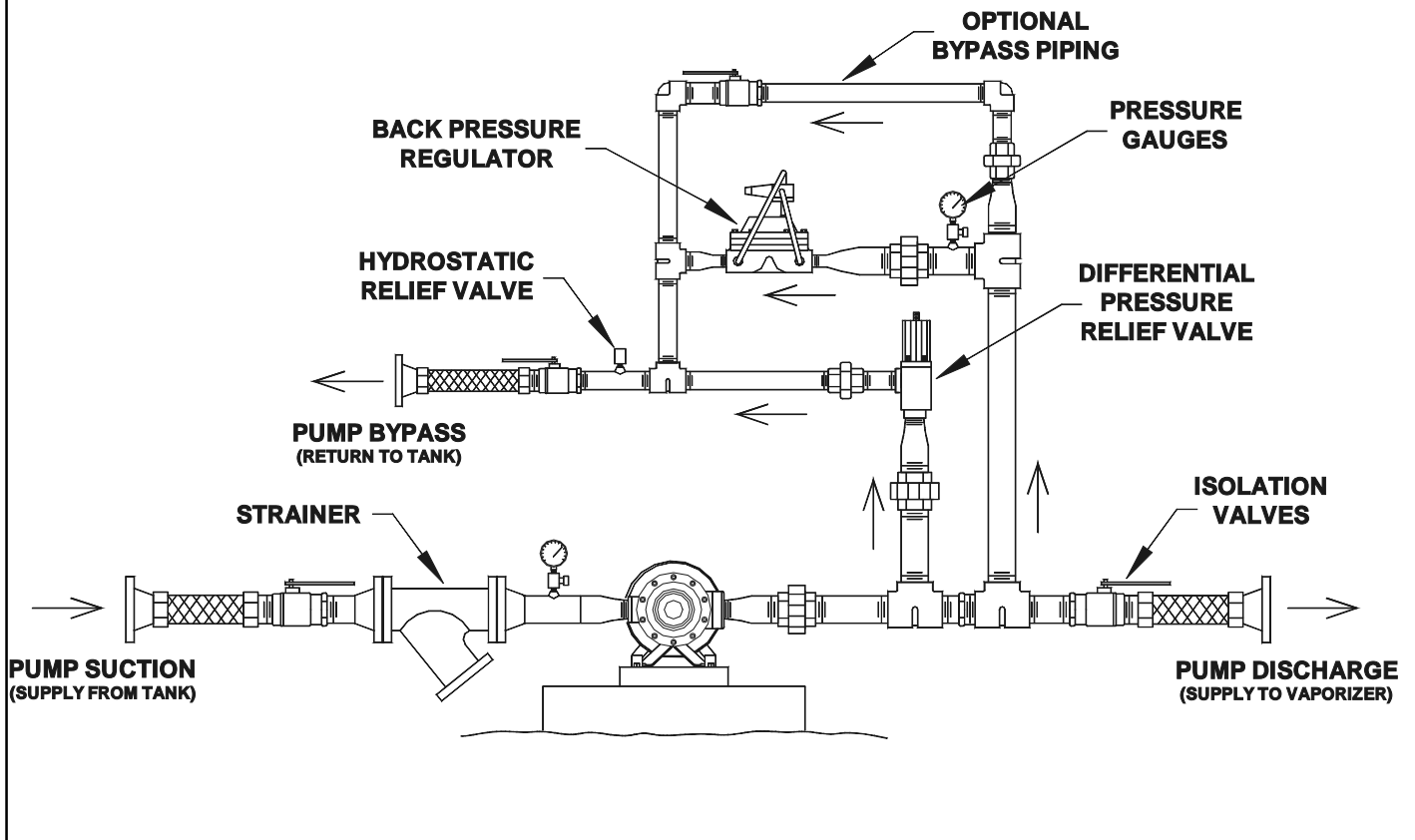
Duplex 2" Pump Package Shown

OPTIONS

- Magnetic Starter Package
- Pressure activated Stop/Start Package
- All Weld Configuration
- Spare Parts Kit

STABILIZER™ SERIES

TYPICAL STABILIZER™ DESIGN



- Contact EEI for all Pump Sizing.
- Product improvement is a continuing goal at Ely Energy, Inc. Designs and specifications are subject to change without notice.

STABILIZER™ is a U.S. trademark of Ely Energy, Inc.



11385 E. 60th Place So.
Tulsa, Oklahoma 74146, USA

Phone: 918.250.6601

Fax: 918.254.5412

Visit us at: www.elyenergy.com

E-mail: sales@elyenergy.com

Copyright 1999 - Ely Energy Inc.

Ask for your free **"ELY ENERGY CORPORATE BROCHURE"**

Represented By:

Publication 4/14/03
Supersedes SB1/99.1