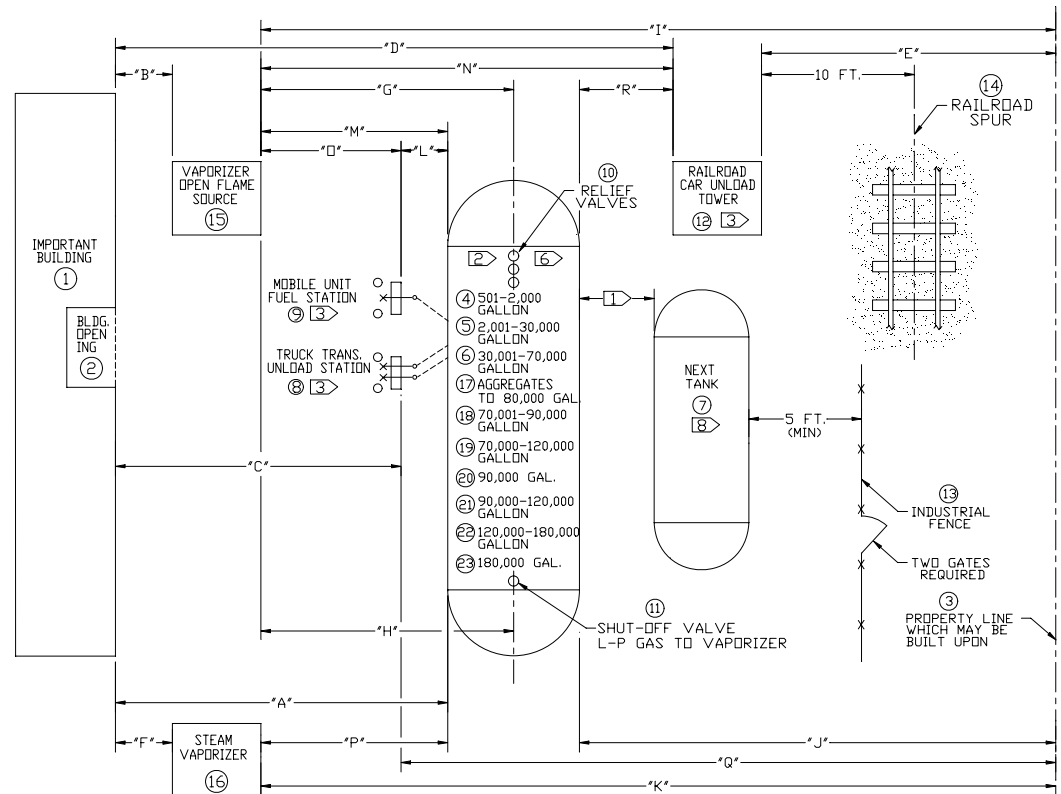


Distance Requirements

DRAWINGS ARE 'TYPICAL ONLY' AND NOT INTENDED FOR ENGINEERING PURPOSES

STANDBY L-P GAS PLANT EQUIPMENT LOCATION (MINIMUM CLEARANCE REQUIREMENTS PER CODE)						
DIM	DESCRIPTION (POINT TO POINT)	DISTANCE-IN-FEET [8]				
		NFPA 58	FM	COMB. CONST. OR BUILDING W/ BASEMENT	MASONRY WITHOUT BASEMENT	BUILDING WITH BASEMENT
A	1 TO 4	25	75	150	50	75
	1 TO 5	50		200	100	150
	1 TO 6	75		300	125	175
	1 TO 17	-	75	300	-	225
	1 TO 18	100		300	150	250
	1 TO 19	[6]		-	-	-
	1 TO 20	100		-	-	-
	1 TO 21	125	[7]	300	175	250
	1 TO 22			300	200	300
	1 TO 23	[6]		-	-	-
B	1 TO 15	25		-	50	100
	2 TO 15		50	-	50	-
C	1 TO 8,9	10-25 [4]		200	100	150
	2 TO 8,9	25	75	-	200	-
D	1 TO 12	10-25 [4]		50	100	-
	2 TO 12	25	75	-	200	-
E	3 TO 12	10-50 [4]	[6]	-	25	-
	1 TO 16	[6]		-	[6]	-
F	2 TO 16			-	100	-
	1 TO 10	50	75	-	-	-
H	15 TO 11	15		-	75	-
	15 TO 3		75	-	-	-
I	3 TO 4	25		-	25	-
	3 TO 5	50		-	75	-
	3 TO 6	75	75	-	75	-
	3 TO 17	[6]	75	-	75	-
	3 TO 18	100		-	-	-
	3 TO 19			-	-	-
J	3 TO 20	100		-	-	-
	1 TO 21	125	[7]	-	100	-
	3 TO 22			-	-	-
	3 TO 23	[6]		-	-	-
	3 TO 16		[6]	-	[6]	-
	8,9 TO TANK		50	-	75	-
M	15 TO TANK	10	15	-	-	-
	15 TO 12			-	75	-
O	15 TO 8,9	20	75	-	-	-
	16 TO TANK		15	-	50	-
Q	3 TO 8,9	10-50 [4]	75	25	25	25
	4,5,6 TO 12			50	50	50
R	17,18,19 TO 12	10	20	75	75	75
	20,21,22,23 TO 12			100	100	100

NOTE: ELY ENERGY, INC. IS NOT RESPONSIBLE FOR ERRORS IN EQUIPMENT LOCATION BY OTHERS DUE TO THE USE OF THIS DRAWING. THIS DRAWING ONLY REFLECTS ELY ENERGYS INTERPRETATION OF VARIOUS INSURANCE COMPOSITE CODE REQUIREMENTS AS OF RELEASE OF THIS DRAWING.



- 1 3 FT. (FM-ALL SIZES, NFPA AND IRI-2001 TO 30,000 GALLON OR 1/4 OF THE SUM OF DIAMETERS OF ADJACENT CONTAINERS.
- 2 TANKS ARE RATED IN WATER GALLON CAPACITY.
- 3 POINT OF TRANSFER.
- 4 DISTANCE DEPENDS ON EXPOSURE.
- 5 IRI CLEARANCE REQUIREMENTS ARE FLEXIBLE, WITH FINAL DETERMINATION AS THE RESPONSIBILITY OF THE IRI FIELD OFFICE IN THE LOCATION OF THE FACILITY.
- 6 THIS DIMENSION IS NOT SPECIFIED BY CODE, CHECK WITH THE AUTHORITY HAVING JURISDICTION.
- 7 200 FT. FROM BUILDING HAVING HYDRANT PROTECTION, 350 FT. FROM BUILDING HAVE NO HYDRANT PROTECTION.
- 8 DISTANCE BETWEEN ADJACENT TANK GROUPS:
1/4 OF THE SUM OF DIAMETERS OF ADJACENT CONTAINERS.
NFPA 58 _____ [6]
FM _____ 75 FT.
IRI _____ 50 FT.

Provided by: **Ely Energy Inc-USA**
Publication: C022
Published in: America 2/10/99

Proprietary Data of Ely Energy Inc.
Not to be reproduced without permission
Ely Energy Inc-1999

A Global Leader in LPG Energy Systems
Fax: ++1.918.254.5412
Visit us: www.elyenergy.com